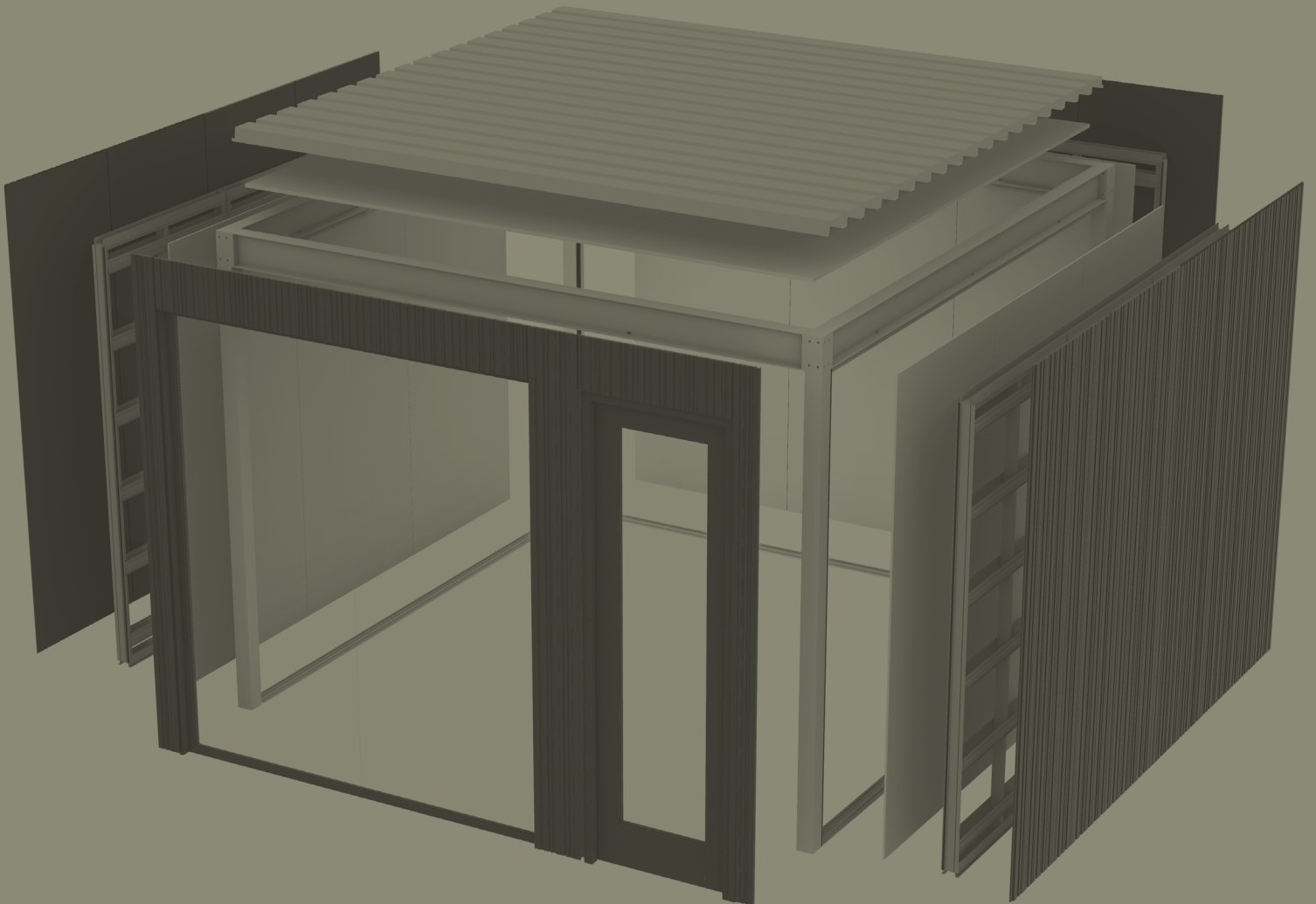


---

# Move over Drywall, it's time for a change. Meet the Modwall Adaptable Room System





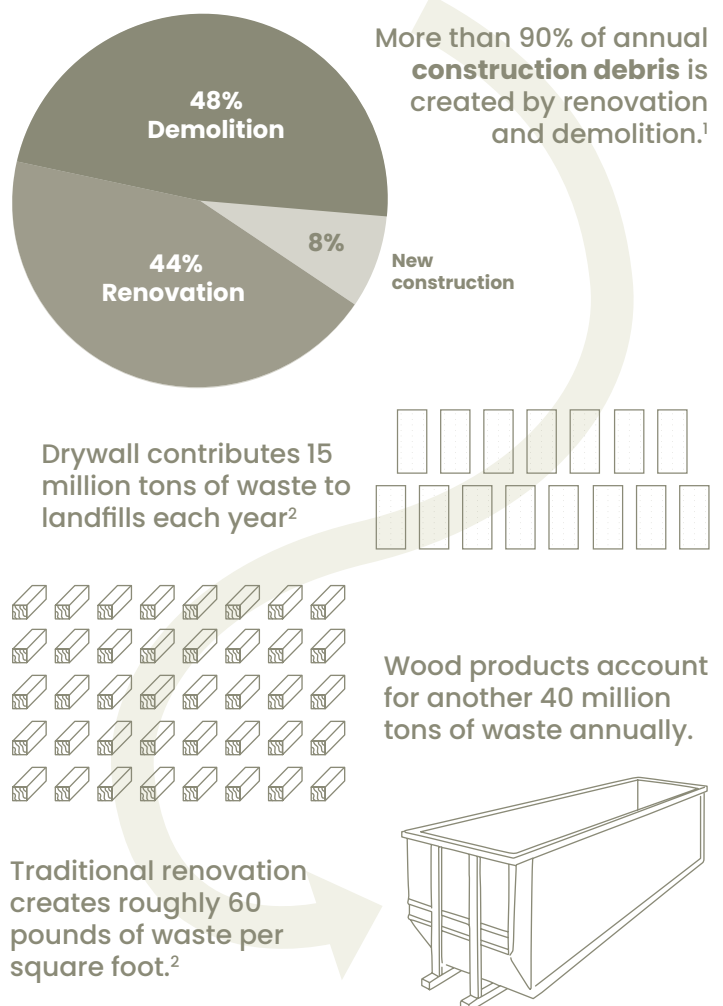
# Let's do away with the “out with the old, in with the new” mentality.

The traditional solution to workplace space design is to tear down, dispose of and rebuild, each and every time a space needs to evolve. Even the most virtuous materials, even those built to be “demountable” get demolished and thrown away.

The result? Tremendous waste—office downtime, lost productivity, capital expenditure and material sent to the landfill.

*It's time to leave the old ways behind.*

The typical workplace will be renovated every 3–5 years; **with most of the materials going directly to landfill.**



<sup>1</sup> [www.epa.gov/smm/sustainable-management-construction-and-demolition-materials](http://www.epa.gov/smm/sustainable-management-construction-and-demolition-materials)

<sup>2</sup> [www.visualcapitalist.com/sp/how-much-waste-does-a-renovation-create/](http://www.visualcapitalist.com/sp/how-much-waste-does-a-renovation-create/)



Spaces are built for  
people, and people  
change, grow, and evolve.  
**Modwall does too.**







Modwall was awarded a 2023 Green Good Design Sustainability Award by The Chicago Athenaeum: Museum of Architecture and Design and The European Centre for Architecture Art Design and Urban Studies.





# How It Works

*More use,  
less waste.*

Modwall is an intelligent kit of parts, designed to be easy and less disruptive to install on Day 1, and simple to disassemble and reuse, again, and again, and again in the future.

---

## Day 1

Less downtime

No wet trades

Choose packaged finishes  
or use your own



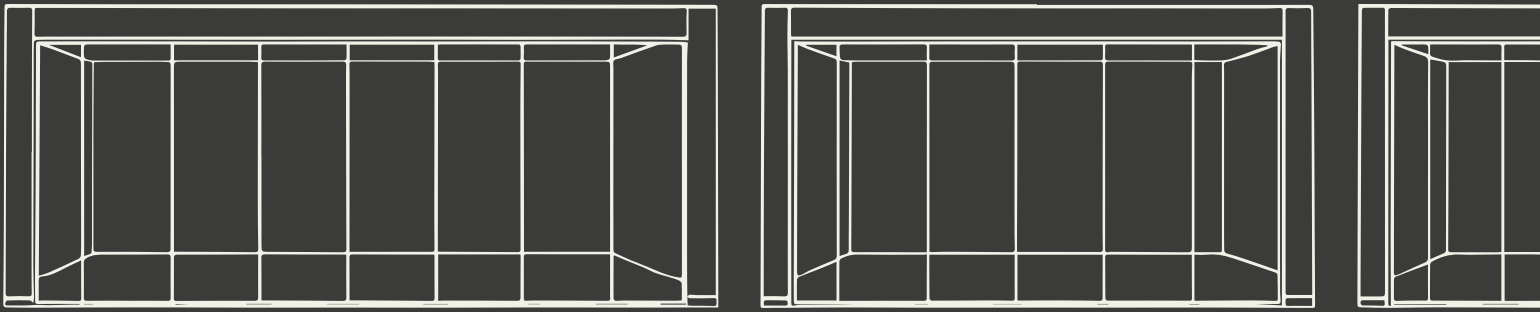
---

## Day 2

Replace or refresh finishes

Disassemble, reconfigure,  
and reuse





# Less is *truly more.*

## **Built for the Future**

An intelligent kit of parts built for reuse, again and again, adding value on Day 1, Day 2, Day 3 and beyond.

## **High Performance**

The flexibility and acoustical performance of drywall without the mess, waste, and downtime.

## **Easy Building Integration**

Designed to be free-standing in any space, with plug-and-play connections to base building systems.

## **Modular in Concept, Not in Aesthetic**

A modular solution that helps realize design intent, not drive it. Use our curated finishes or pair with your own selections.

## **Less Disruption**

Our prefabricated system is designed for assembly without wet trades, resulting in faster installation and less disruption to occupants.

# Product Detail

## Specifications

Ceiling Height	Up to 9'
Uninterrupted Room Size	Up to 16' x 32'
Finishes	Standard MDF, with customizable options
Fixtures	Various Lighting Options including Pendants and recessed LED cans
Integrations	Integrated Electrical, AV, and Lighting Control Capabilities
Glazing	Aluminum Frame interior storefront
Door	Glazed or Solid Core Wood with Various Hardware Options
Ceiling	Armstrong CALLA High CAC

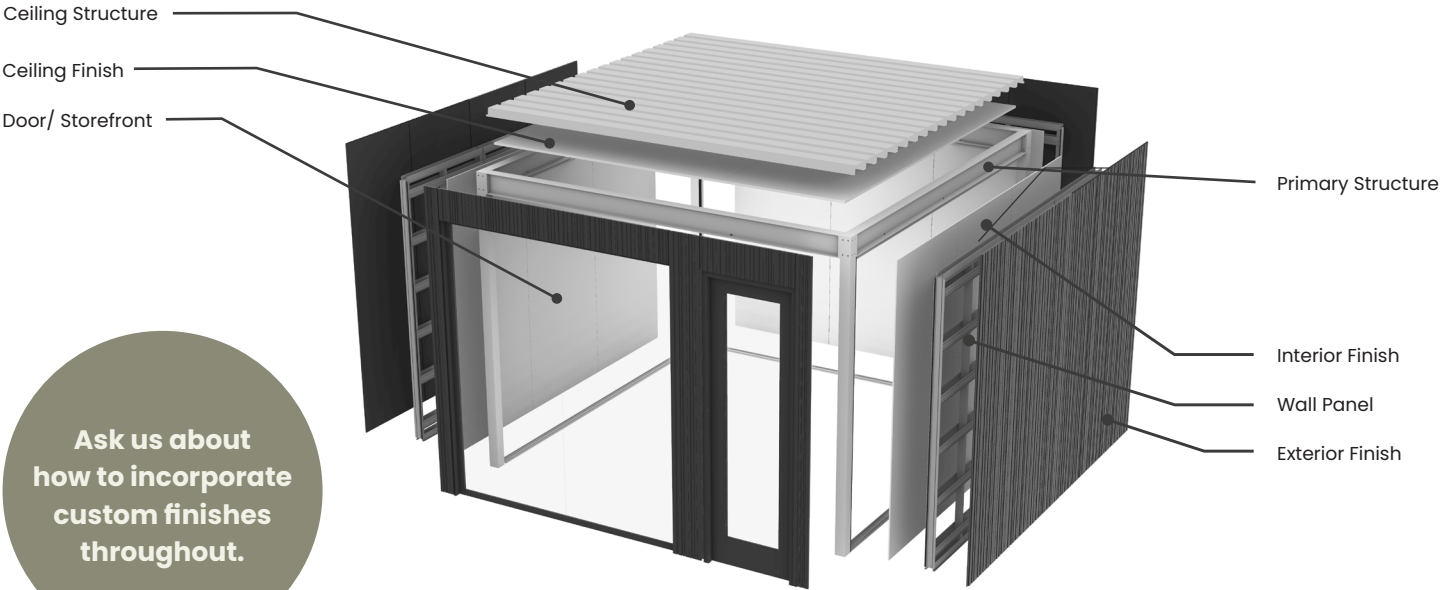
## How We Measure Acoustic Comfort

Acoustic Comfort is a complex interaction of many factors, but what matters most in real world situations is that the spaces we build provide a place for quiet and focus, as well as a private place for collaboration and conversation.

We believe that standard lab testing provides important metrics on performance, but it isn't always easy to see "through the noise" of ratings into how a product will actually perform in the real world.

**Our products are tested to industry standards to determine real world acoustic performance that is based on both metrics and on human perception.**

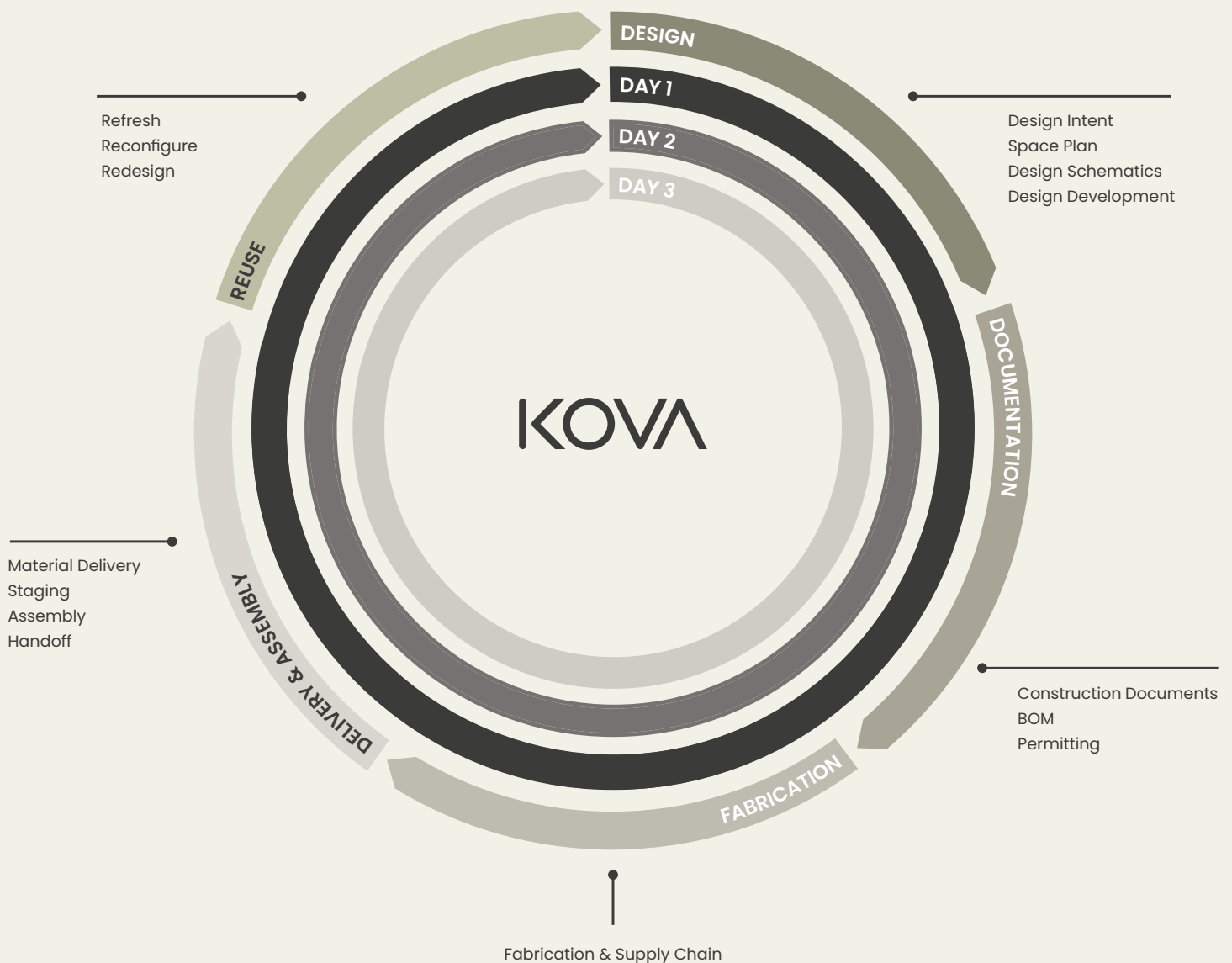
**Ask us about our proprietary acoustic testing lab.**





# Designing *together.*

We partner with you on day 1 to address design intent, create a space plan, curate and assemble the right Modwall solution for your project. Each reuse creates increased efficiency and time savings.



We create solutions from building envelope to the smallest interior detail. All aimed at creating more harmonious, healthier, more sustainable living, working, playing spaces...for humans.

### KOVA Construct



Architectural Glazing  
Systems



Exterior Glazing



Multi-trade Assemblies



Windows

### KOVA Connect



Interior Storefront



Privacy Pods



Modular Wall Systems

### KOVA Components



Bath & Kitchen Kits



Tubs, Sinks, Toilets



Accessories



Plumbing



Lighting



Trim





---

KOVA Go. Build.

[kovaproducts.com](http://kovaproducts.com)  
[@kovaproducts](https://www.instagram.com/kovaproducts)  
[linkedin.com/kovaproducts](https://www.linkedin.com/company/kovaproducts)